



AVANEESH

2 & 3 BHK LAVISH RESIDENCES
NIGDI PRADHIKARAN



Artist's Impression

BUILDING NAME

BUILDING NAME



To be embraced in a million joys everyday, effortlessly, in a home that brings your definition of peace and elegance to life is one of the greatest virtues of living luxuriously.

With Avneesh, we have custom-designed this virtue with vibrant shades of happiness and exclusivity!



AN ADDRESS THAT EXUDES PREMIUMNESS!

Avneesh introduces you to a premium world, shared by a few exceptional families, that interweaves the beauty of an elite central locale with modern living, flawlessly. Every corner of every home and the amenities at Avneesh are designed to offer a remarkable quality that go a long way in augmenting the lifestyles of its residents. Located in the serene yet impeccably connected and convenient part of Nigdi, it is a crème de la crème address aspired by many.



A HOME

REplete WITH EVERY SENSE OF LUXURY!

The 2 & 3 bedroom homes at Avneesh are generous in every way. Spacious and lavishly ventilated, your plush abode here is designed to be your peaceful sanctuary as well as an urban retreat you can boast of. All your experiences at Avneesh are complemented with enchanting views that are made more serene from your personal sitouts.

Come home to a place filled with laughter & content; an address that welcomes you into its blissful world and lets you be you, unapologetically!



A LOCALE THAT HAS IT ALL!

Life's simpler and relaxing when all that you need is just around the corner. Risen to be one of the most opulent cosmo areas of PCMC, Nigdi has witnessed relentless development in the last few years without losing its verdant charm.

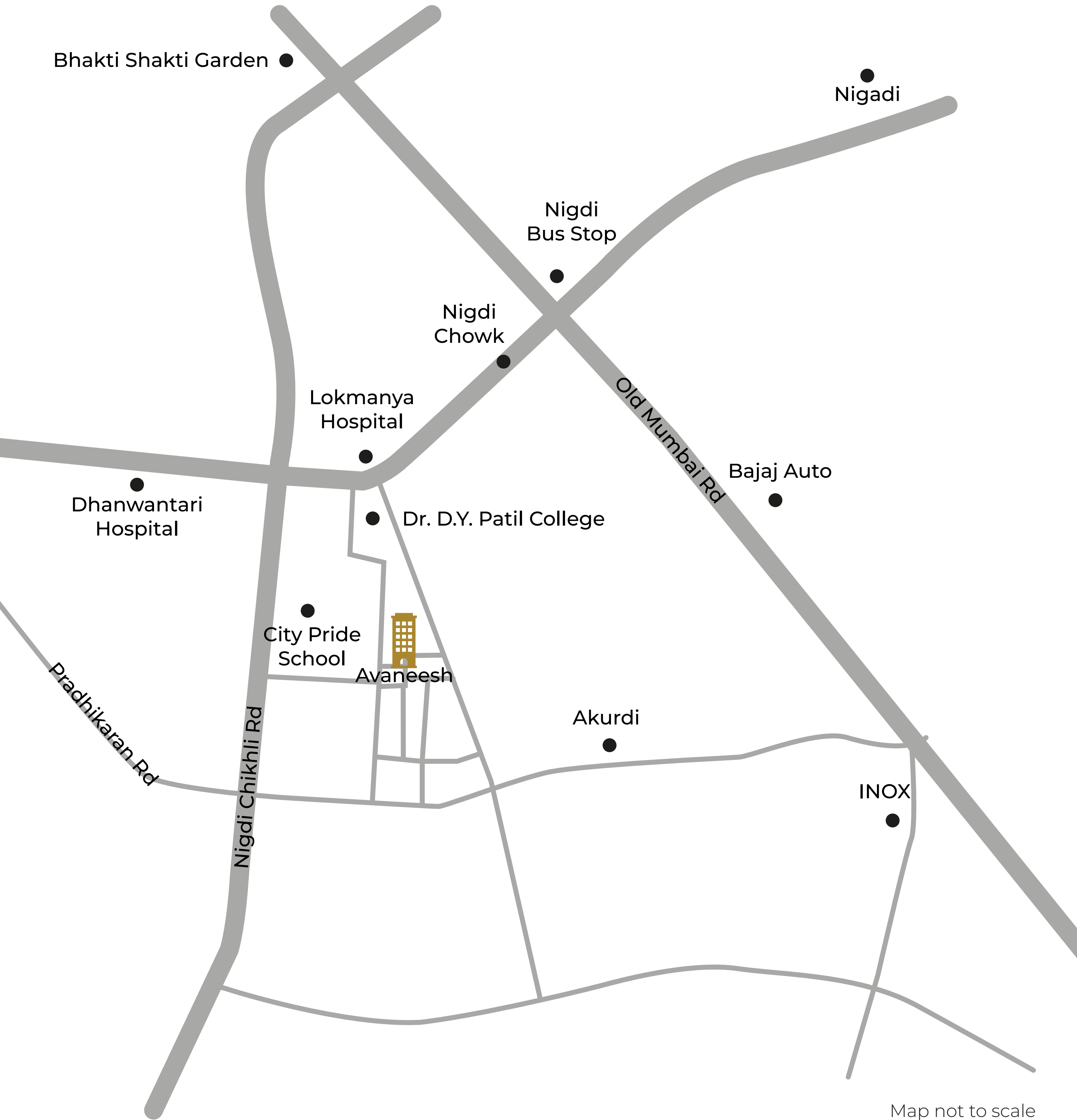
Complementing the grandeur of this scenic neighbourhood further, Avneesh places you right next to everything you need, strategically. Revel in the bounties of nature while enjoying the splendours of a contemporary life!

Close proximity to

- Renowned schools, colleges, banks, hospitals and more.
- Food, hospitality & leisure destinations
- IT & commercial hubs of PCMC, Aundh, Wakad, etc.
- Major industrial areas in & around Pune



LOCATION MAP



Map not to scale

A LIFESTYLE ENRICHED WITH COMFORT

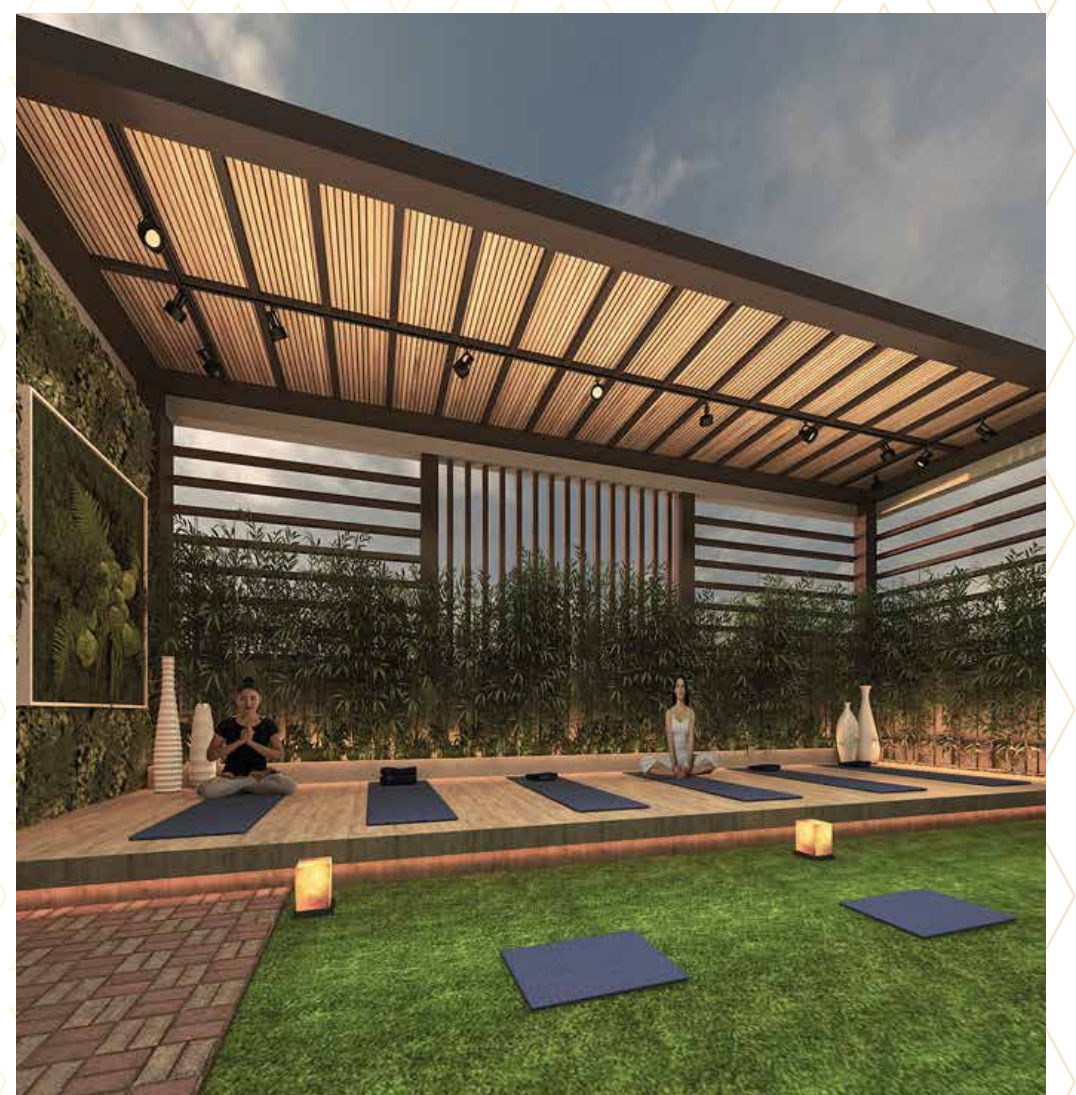
Luxury and comfort permeates in every detail of your home at Avneesh. From private balconies to top-tier security and landscaped gardens, every element and aspect here is thoughtfully planned with finesse to upgrade your quality of living. Rejuvenate, relax & rejoice in the ultimate comfort of your home!



Gathering Place



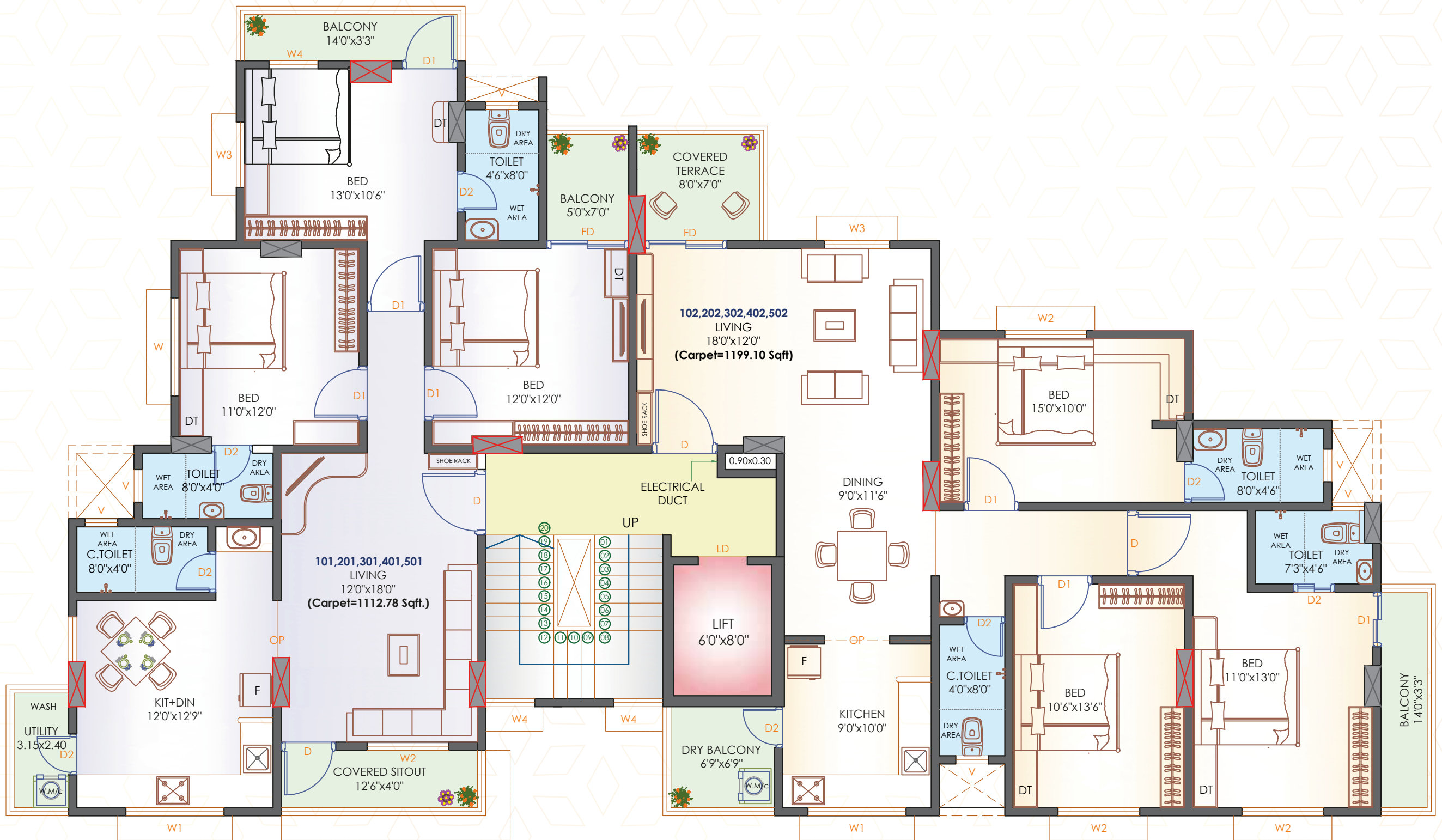
Terrace area - Gazebo



Yoga & Meditation Deck

FLOOR PLAN

1, 2, 3, 4, 5



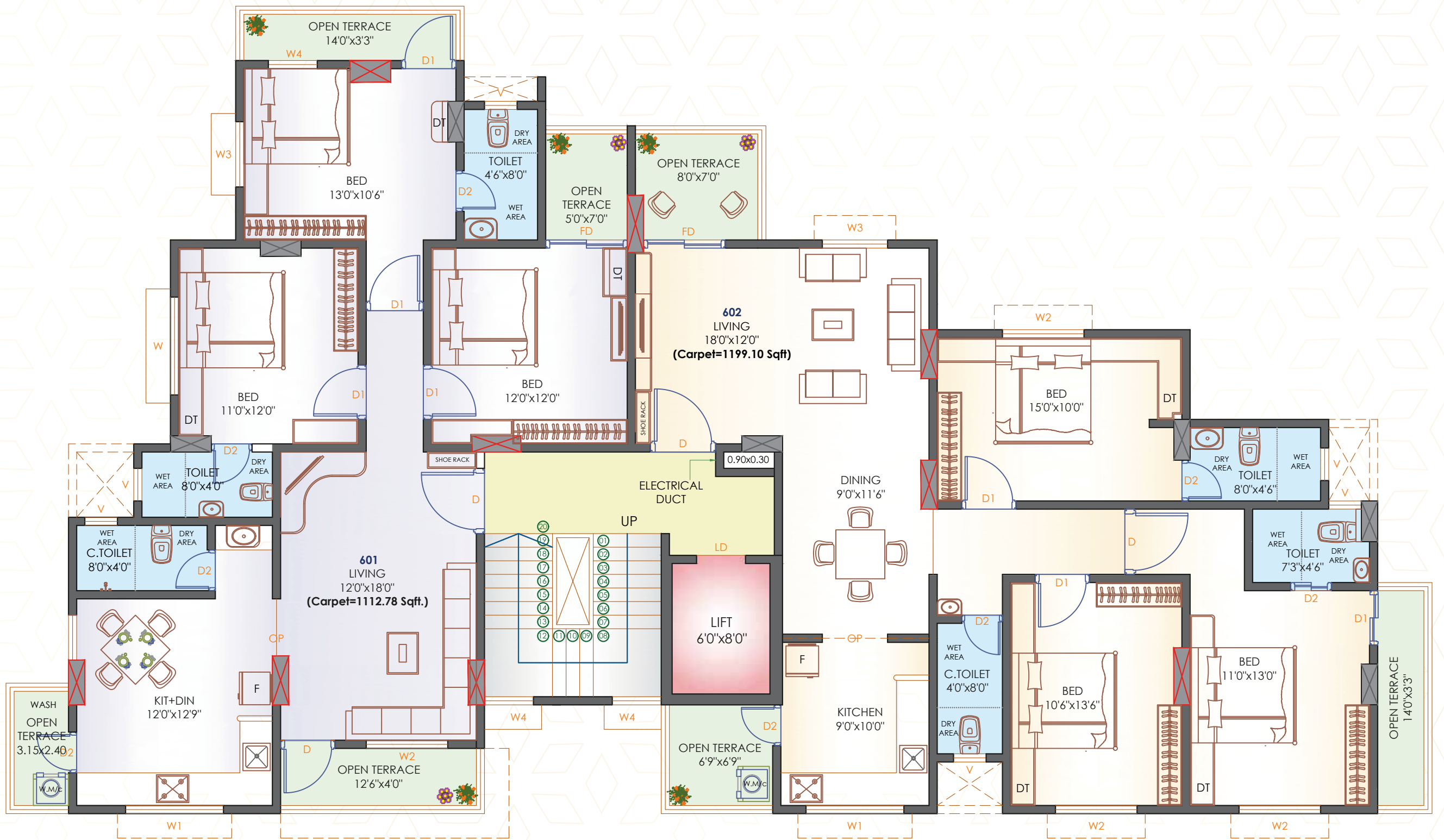
CARPET AREA STATEMENT (IN Sqft)

FLAT NO	CARPET AREA	BALCONY AREA	COV. TERRACE SITOUT	OPEN TO SKY TERRACE AREA	TOTAL CARPET AREA	SALEABLE AREA (35%)
101,201,301,401,501	982.32	89.77	40.69	0.00	1112.78	1502.25
102,202,302,402,502	1077.91	73.97	47.22	0.00	1199.10	1618.785



FLOOR PLAN

6

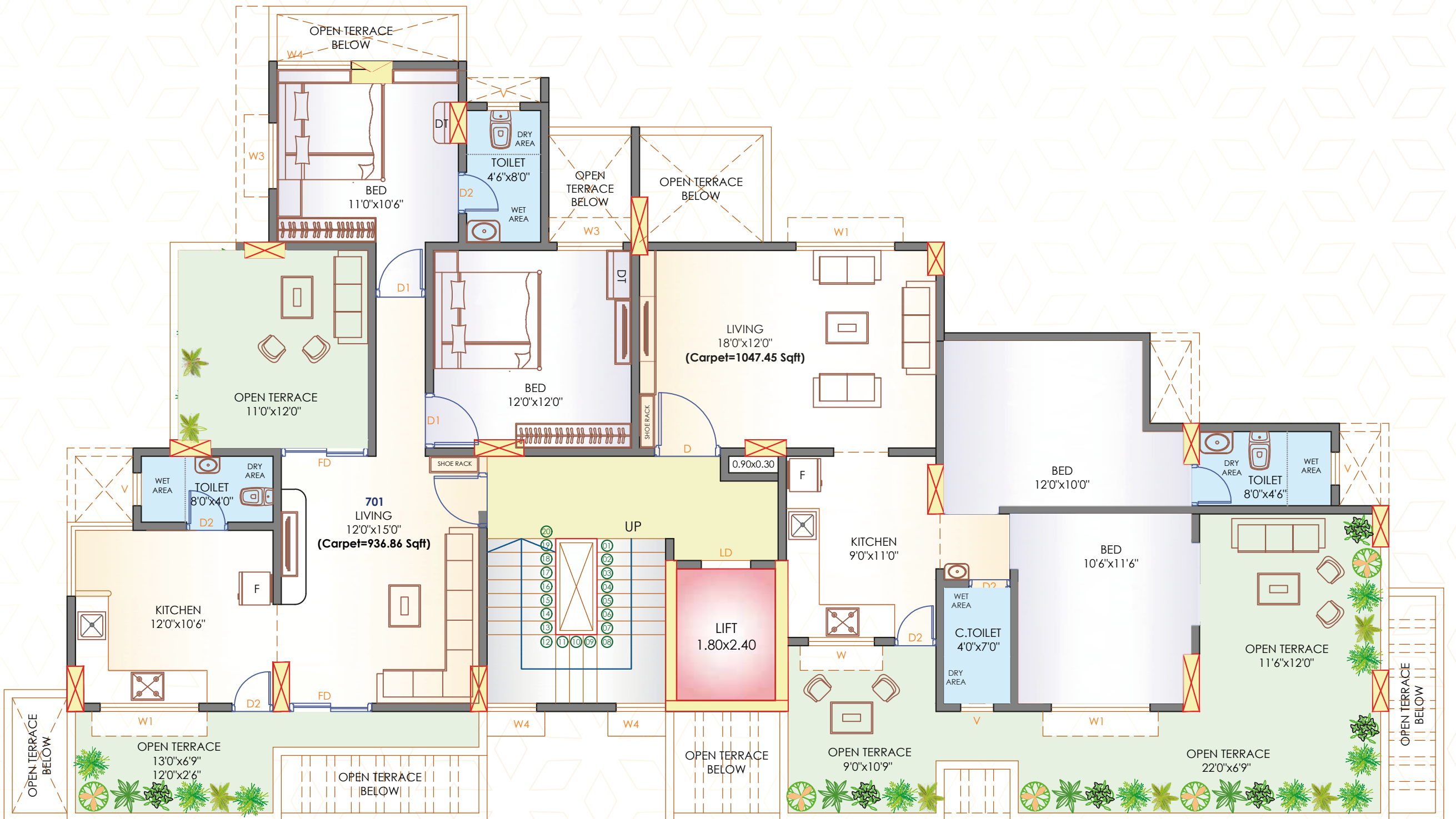


CARPET AREA STATEMENT (IN Sqft)						
FLAT NO	CARPET AREA	BALCONY AREA	COV. TERRACE SITOUT	OPEN TO SKY TERRACE AREA	TOTAL CARPET AREA	SALEABLE AREA (35%)
601	982.32	0.00	0.00	130.46	1112.78	1502.25
602	1077.91	0.00	0.00	121.19	1199.10	1618.785



FLOOR PLAN

7

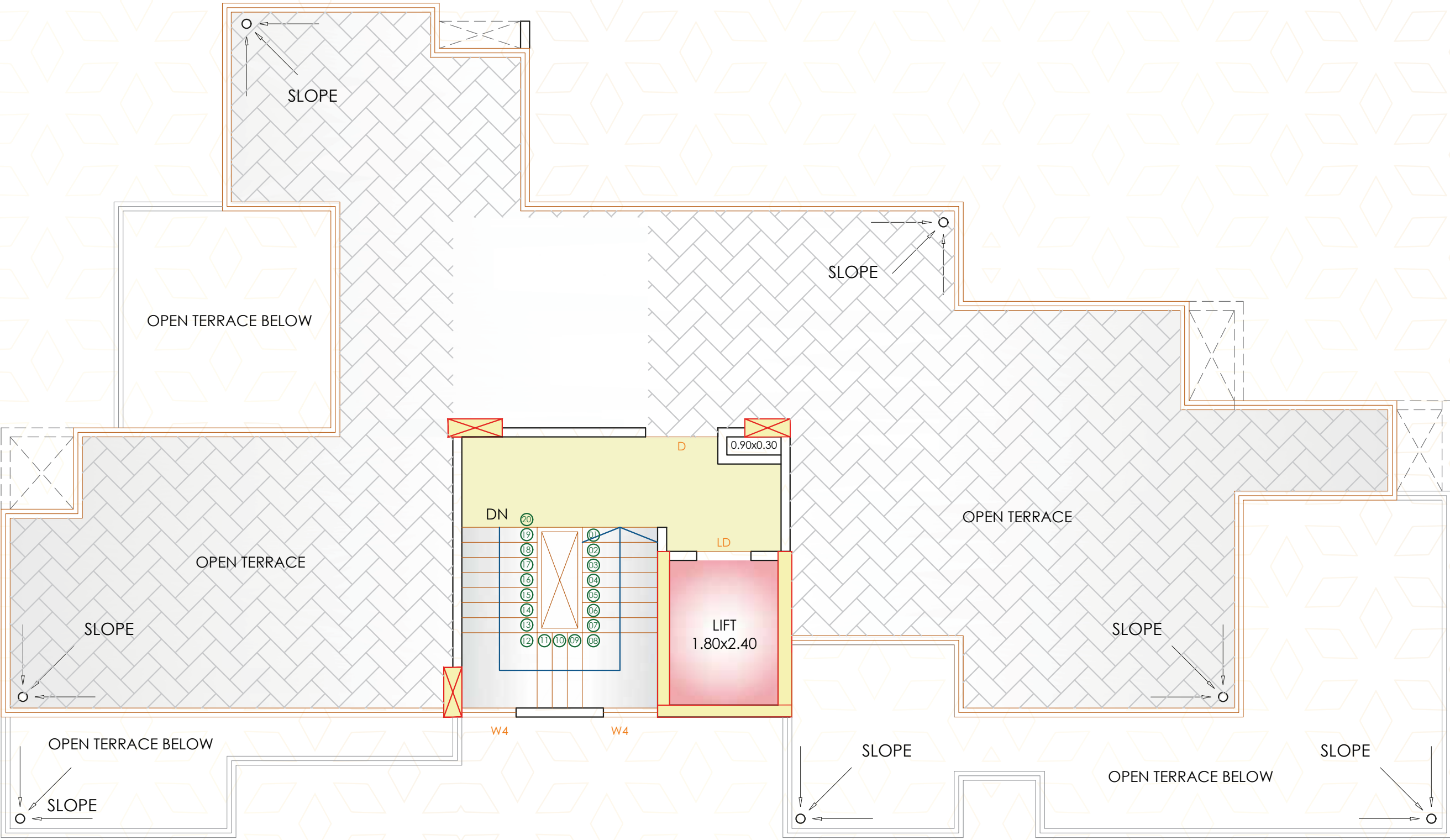


CARPET AREA STATEMENT (IN Sqft)

FLAT NO	CARPET AREA	BALCONY AREA	COV. TERRACE SITOUT	OPEN TO SKY TERRACE AREA	TOTAL CARPET AREA	SALEABLE AREA (35%)
701	705.25	0.00	0.00	231.61	936.86	1264.76
702	685.13	0.00	0.00	362.32	1047.45	1414.06



TERRACE FLOOR PLAN



A VISION

TO BUILD A LUXURIOUS, RELAXING & GREEN TOMORROW!

Kher-Laghate-Sahastrabudhe - The KLS Group has been at the forefront of redevelopment & building luxury residential & commercial spaces across central and West Pune. We have been an emblem of exclusive living for over 3 decades and continue to build spaces that define comfort, quality & excellence in a whole new light.

From being meticulous about every detail we incorporate in our projects, be it safety, convenience, leisure, indulgences or security, we have also focused on the environment around and inside your homes. All your experiences at a KLS home are complete with a hint of natural bliss, lush surroundings and sustainable practices. At the nexus of all our designs and processes are our clients. Their trust and commitment is what we treasure and incorporate thoughtfully in every space we curate.

Having been a well-known name in redeveloping homes, lives & experiences in key locales like Narayan Peth, Kothrud, Erandwane and more, we have also forayed into the ever-growing cosmo locales such as Balewadi, Pashan, etc. With Avneesh, we envision to take the quality of living, bliss and modern comforts to a level anew in a premium and fulfilling area of Nigdi.





AVANEESH

Site address

Email ID

Website

Contact

RERA